



What is Hospice

Our Hospice program is a coordinated effort of palliative care (relief from pain and suffering) and supportive services provided in the home. Our purpose is to provide for physical, psychological and spiritual care for the terminal patient and their families.

Services are provided by a physician directed interdisciplinary team of professionals and volunteers. Bereavement care is available to the family, following the loss of their loved one.



When your eyes need

to focus on the horizon for stability, but your heart needs to share the precious moments left in your loved ones life, you have Palo Pinto Hospice to step in and care



Who Pays for Hospice?

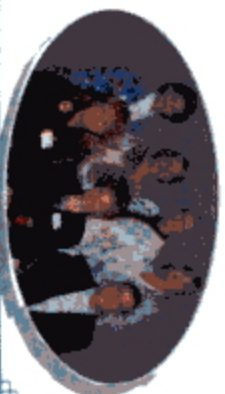
Hospice coverage is widely available. It is provided by Medicare nationwide, by Medicaid in 39 states including Texas and by most private insurance providers. However, to be sure of coverage, families should check with their employer or health insurance provider.

TESTIMONIALS

There is no way I can find the right words to thank you for your kindness & caring & all your help in our loved ones last days.

Thanks for your support! It meant so much to me to have an agency close to us. You were already familiar with my Dad's Medical History. I felt a security because of our experiences with your home health caregivers. Your people are the best and very professional.

We are a team of professionals focused on easing the pain and suffering of our patients and their families through difficult times.



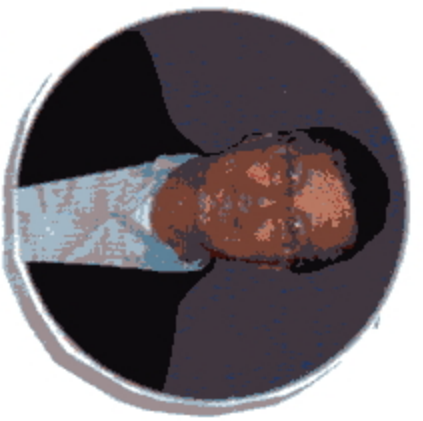
Who is Eligible?

Medicare has three key eligibility criteria:

1. The patient's doctor and the hospice medical director use their best clinical judgment to certify that the patient is terminally ill with a life expectancy of six months or less, if the disease runs its normal course.
2. The patient chooses to receive hospice care rather than curative treatments for their illness.
3. The patient enrolls in a Medicare-approved hospice program.



Volunteers play a very important role in hospice services. They provide help in every facet of the program, from patient and family concerns to clerical and fund raising talents, and much more. If you want to make a difference in your community, in the lives of others and in your own life, please join our remarkable team of volunteers as they bring their individual expertise, love, talent and support to others through the Palo Pinto Hospice Program.

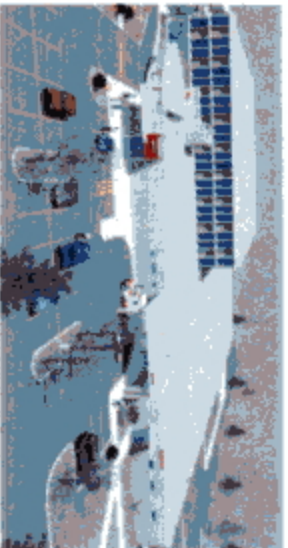


Dr. Ed Evans, Medical Director

Palo Pinto Hospice can provide you with:

- Physicians Services
- Nursing Services
- Home Health Aide Services
- Social Work Services
- Community Resource Assistance
- Bereavement Support
- Spiritual Support
- Chaplain Services
- Medical Equipment
- Prescription Medications
- Physical & Occupational therapy
- Volunteer contacts
- In-patient Care
- Respite Care

Our Mission



Assisting the Patient to integrate their present experience of illness and to live each day to its fullest as determined by the Patient

Hospice Philosophy

- Recognizes dying as a part of the normal process of living
- Focuses on maintaining the quality of remaining life
- Affirms life and neither hasten nor postpones death
- Supports patients and families so that they may be free to attain a degree of mental and spiritual preparation for a death that is satisfactory to them.



HOSPICE

A safe place for travelers on a difficult journey



A not-for-profit organization brought to you by

Palo Pinto County Hospital District

940-392-4471
24 hour service at
940-392-7891
Ask for "Hospice Nurse"
FAX: 940-398-6949